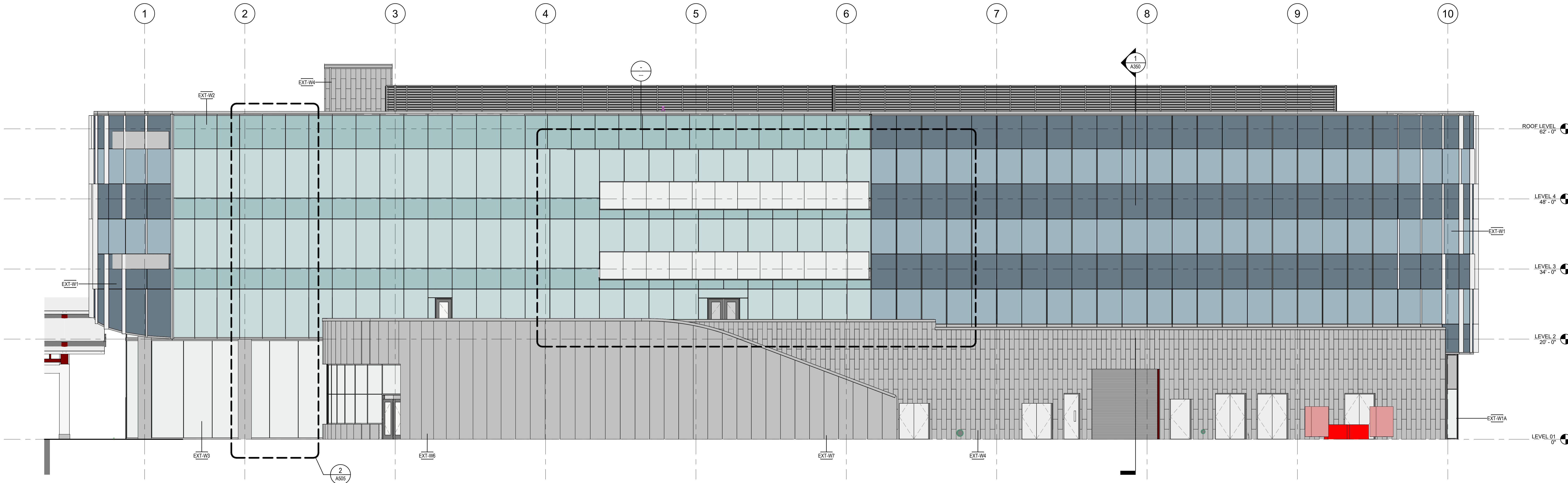
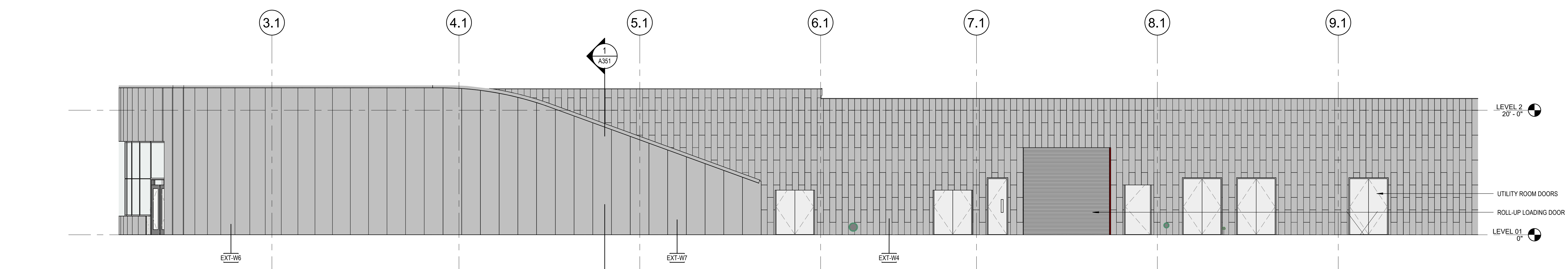


3 BUILDING ELEVATION - NORTH  
1/8" = 1'-0"



2 BUILDING ELEVATION - WEST  
1/8" = 1'-0"



1 PODIUM ELEVATION - WEST  
1/8" = 1'-0"

COLOR	EXTERIOR GLAZING TYPES
	GL-01 VISION
	GL-02 SPANDREL
	GL-03 VISION
	GL-04 SPANDREL
	GL-05 LOW-IRON VISION
	MTP-01 GLAZED-IN METAL PANEL

EXTERIOR ASSEMBLIES	
TYPE	DESCRIPTION
EXT-F1	CONCRETE SLAB ON GRADE, CONCRETE SLAB (REFER TO STRUCTURAL), VB-01 VAPOR BARRIER.
EXT-R1	KEE ROOF ASSEMBLY (HIGH ROOF), RS-01 ROOFING MEMBRANE, 5/8" EXTERIOR COVERBOARD SHEATHING, INS-01C2 4" RIGID INSULATION (R20 MINIMUM).
EXT-R2	PAVER ASSEMBLY AT AMENITY TERRACE, PAV-01 PAVER TILES, RS-02 MIAM ECHO ROOF SYSTEM, 2PLY COLD APPLIED ROOFING MEMBRANE, 1/2" EXTERIOR CEMENT BOARD SHEATHING, INS-01C2 TAPERED RIGID INSULATION - 4" MIN AT LOW POINT (R20 MIN), 4" MIN AT LOW POINT (R20 MIN), WATERPROOFING MEMBRANE/VAPOR BARRIER.
EXT-R3	PLANTING ASSEMBLY AT AMENITY TERRACE, PLANTING MEDIUM, RS-03 MIAM ECHO ROOF SYSTEM, 2PLY COLD APPLIED ROOFING MEMBRANE, INS-01C2 TAPERED RIGID INSULATION - 4" MIN AT LOW POINT (R20 MIN), 4" MIN AT LOW POINT (R20 MIN), WATERPROOFING MEMBRANE/VAPOR BARRIER.
EXT-R4	STANDING SEAM ROOF ASSEMBLY (LOW ROOF), RS-04 STANDING SEAM ROOF, SELF-ADHERING UNDERLAYMENT, 5/8" EXTERIOR COVERBOARD SHEATHING, INS-01C2 TAPERED RIGID INSULATION - 4" MIN AT LOW POINT (R20 MIN), 4" MIN AT LOW POINT (R20 MIN), WATERPROOFING MEMBRANE/VAPOR BARRIER.
EXT-S1	VENTILATED SOFFIT ASSEMBLY (TYPICAL), MTP-03 LONGBOARD V-GROOVE 8" PERFORATED METAL SOFFIT, 3 5/8" CFMF.
EXT-W1	TYPICAL CURTAIN WALL - STANDARD GLAZING, EWS-01 TYP MULLION (ES WINDOWS GW-7000), GL-01 GLAZING (BLUE), GL-02 SPANDREL, INS-03A MINERAL WOOL INSULATION BOARD.
EXT-W1A	TYPICAL CURTAIN WALL - STANDARD GLAZING, EWS-01 TYP MULLION (ES WINDOWS GW-7000), GL-01 GLAZING (BLUE), MTP-01 GLAZED-IN METAL PANEL, INS-03A MINERAL WOOL INSULATION BOARD.
EXT-W2	TYPICAL CURTAIN WALL - "CARVE" GLAZING, EWS-02 TYP MULLION (ES WINDOWS GW-7000), GL-03 GLAZING (CLEAR), GL-04 SPANDREL, INS-03A MINERAL WOOL INSULATION BOARD.
EXT-W3	MONUMENTAL GLAZING, EWS-06 GLASS FIN MULLION (VETRAFIN), GL-05 LOW-IRON GLAZING (ULTRACLEAR).
EXT-W4	GFRG ON CMU - INSULATED (SERVICE FROD), LHC-P01 SWISSPEARL, 12" x 48" VERTICAL RUNNING BOND, VERTICAL FURRING CHANNEL, HORIZONTAL FURRING CHANNEL, FLUID-APPLIED AIR BARRIER, CMU-01 8" CMU.
EXT-W5	GFRG ON CMU - UNINSULATED (SERVICE FROD), LHC-P01 SWISSPEARL, 12" x 48" VERTICAL RUNNING BOND, VERTICAL FURRING CHANNEL, HORIZONTAL FURRING CHANNEL, FLUID-APPLIED AIR BARRIER, CMU-01 8" CMU.
EXT-W6	SCALLOPED GFRG ON CMU - INSULATED (CHAMBERS), FRC-01 SCALLOPED GFRG (3 PANEL WIDTH, 5/8" RADIUS), 2 CHANNEL (VERTICAL), HYBRID COMPOSITE METAL GIRT (HORIZONTAL), INS-03A 2" MINERAL WOOL INSULATION BOARD - CONTINUOUS (RS-7), FLUID-APPLIED AIR BARRIER, 5/8" EXTERIOR SHEATHING, 8" CFMF, INS-05C 3/2" MINERAL WOOL BATT INSULATION (R13 MINIMUM).
EXT-W7	SCALLOPED GFRG ON CMU - UNINSULATED (EXTERIOR STAIR), FRC-01 SCALLOPED GFRG (3 PANEL WIDTH, 5/8" RADIUS), VERTICAL FURRING CHANNEL, HORIZONTAL FURRING CHANNEL, FLUID-APPLIED AIR BARRIER, CMU-02 8" CMU (CROCKET), ADDITIONAL FLUID-APPLIED AIR BARRIER, HORIZONTAL FURRING CHANNEL, VERTICAL FURRING CHANNEL, LHC-P01 SWISSPEARL, 12" x 48" VERTICAL RUNNING BOND.



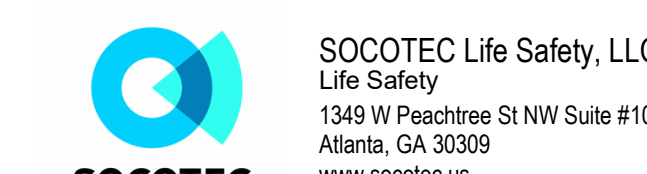
Florida's Warmest Welcome  
Project  
Pompano Beach City Hall  
& Parking Garage  
125 Dixie HWY, Pompano Beach, FL 33060 USA

Client  
RocaPoint Partners

Prepared For  
City Of Pompano Beach  
100 West Atlantic Boulevard,  
Pompano Beach, Florida 33060



All reproduction & related all property rights reserved © 2025  
In Association with



NOT FOR CONSTRUCTION

No.	Description	Date
1	50% SCHEMATIC DESIGN	10/10/2025
2	100% SCHEMATIC DESIGN	11/21/2025
3	50% DESIGN DEVELOPMENT	12/22/2025
4	100% DESIGN DEVELOPMENT	03/06/2026
5	CRG SUBMISSION	03/11/2026

No.	Description	Date
1	50% SCHEMATIC DESIGN	10/10/2025
2	100% SCHEMATIC DESIGN	11/21/2025
3	50% DESIGN DEVELOPMENT	12/22/2025
4	100% DESIGN DEVELOPMENT	03/06/2026
5	CRG SUBMISSION	03/11/2026

PZB  
PZ26-12000002  
05/27/2026

EXTERIOR ELEVATIONS

Original is 100% scale contents of this drawing  
Sheet Number